



DEVON HOUSE

ST. KATHARINE DOCKS

Riverside warehouse offices with
unrivalled views of London

ENTER

DEVON HOUSE

THE BUILDING →

Views, Floor Plans, Specs and Materials



UNIQUE LOCATION →

Discover St. Katharine Docks



TEAM →

More about Blackstone and the delivery team



GET IN TOUCH →

Contact Details



DEVON HOUSE



THE BUILDING
GALLERY

UNIQUE LOCATION
FLOOR PLANS

TEAM
TECHNICAL SPECS

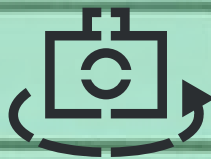
GET IN TOUCH
FINISHES & MATERIALS

RIVERSIDE WAREHOUSE OFFICE SPACE WITH AMAZING VIEWS OF LONDON



ENTRANCE

The fully refurbished main entrance is located on St. Katharine’s Way.



TAKE THE
VR TOUR



1/12



RECEPTION

The co-working atmosphere makes for a relaxed place for people to work, meet or simply have a coffee.

A dedicated reception team is there to make your life easier.

Direct access to the riverside courtyard provides fabulous views of Tower Bridge.



TAKE THE
VR TOUR



2/12

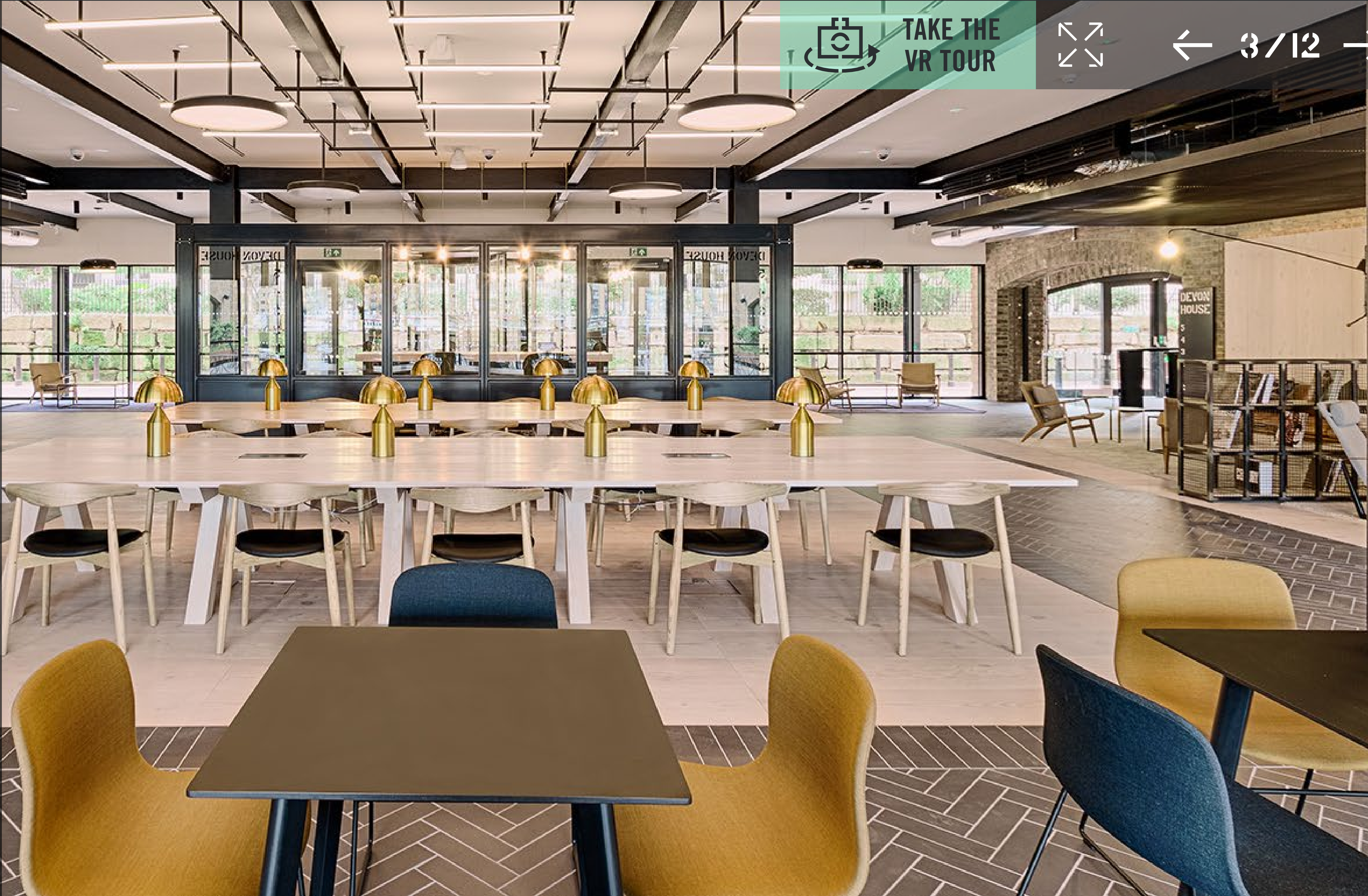


RECEPTION

The co-working atmosphere makes for a relaxed place for people to work, meet or simply have a coffee.

A dedicated reception team is there to make your life easier.

Direct access to the riverside courtyard provides fabulous views of Tower Bridge.



TAKE THE
VR TOUR



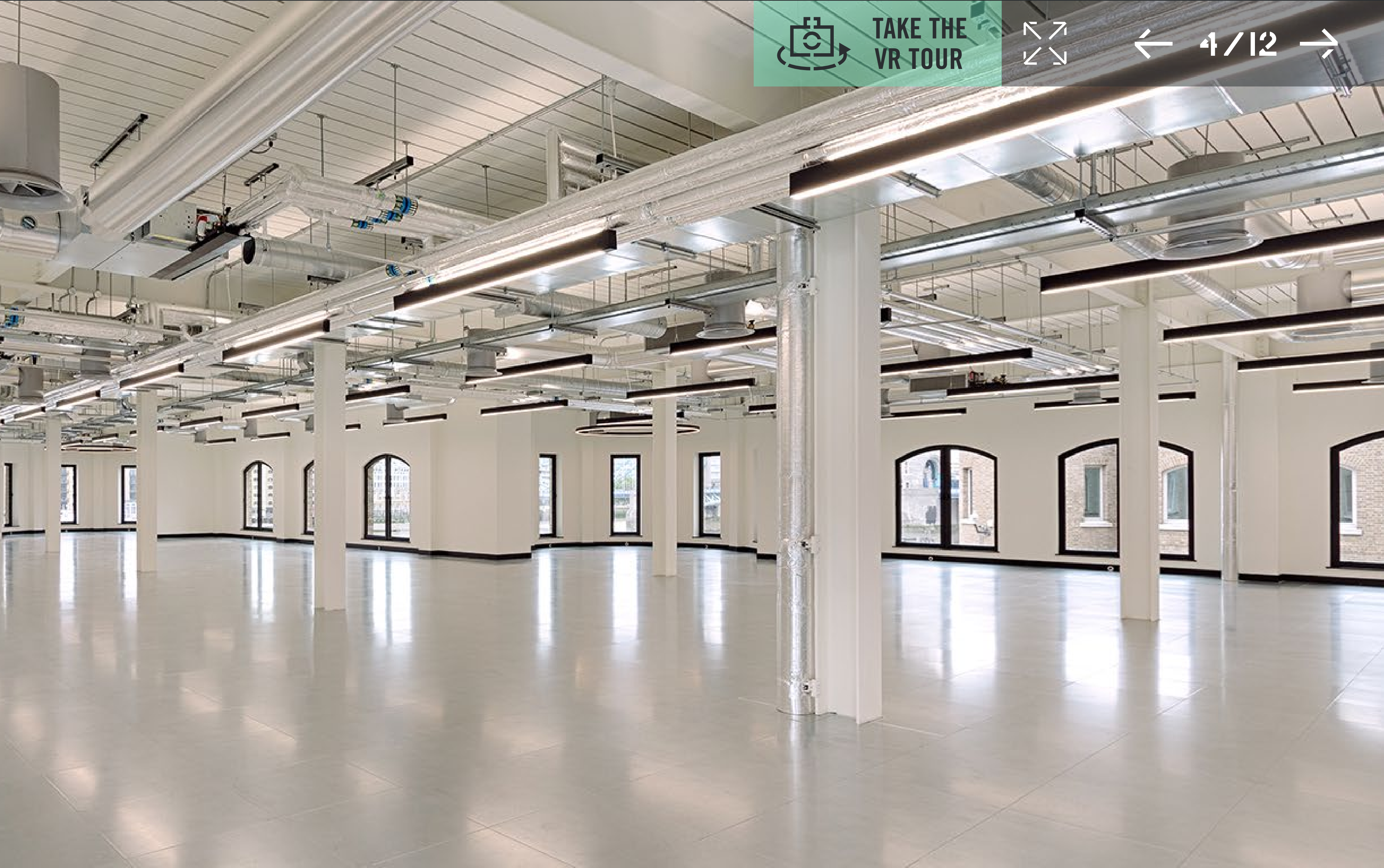
3/12





OFFICE EMPTY

Efficient floor plates and carefully considered services create flexibility and the ability to tailor the fit-out to meet all tenants' requirements.





OFFICE

CORPORATE FIT-OUT

Efficient floor plates and carefully considered services create flexibility and the ability to tailor the fit-out to meet all tenants' requirements.





OFFICE

CREATIVE FIT-OUT

Flexible space and exposed ceilings. A more relaxed spec for the fit out to help stimulate productivity and well being.





TAKE THE
VR TOUR



6/12



TERRACE

Outstanding south facing riverside terrace with one of the best views in London.



TAKE THE
VR TOUR






7/12



TERRACE

Outstanding south facing riverside terrace with one of the best views in London.

 TAKE THE
VR TOUR

 8/12 





5TH FLOOR

The 5th floor is a relaxed and airy space served by 4 corner terraces with 360° views of London.



DEVON HOUSE



THE BUILDING
GALLERY

UNIQUE LOCATION
FLOOR PLANS



TEAM
TECHNICAL SPECS

GET IN TOUCH
FINISHES & MATERIALS

COURTYARD

 TAKE THE VR TOUR



 10 / 12 



DEVON HOUSE



THE BUILDING
GALLERY

UNIQUE LOCATION
FLOOR PLANS

TEAM
TECHNICAL SPECS

GET IN TOUCH
FINISHES & MATERIALS

VIEW FROM
TOWER BRIDGE



 11 / 12 



DEVON HOUSE



THE BUILDING
GALLERY

UNIQUE LOCATION
FLOOR PLANS

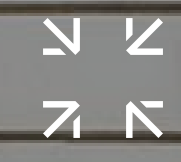
TEAM
TECHNICAL SPECS

GET IN TOUCH
FINISHES & MATERIALS

VIEW FROM
TOWER BRIDGE

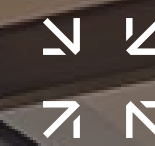
12/12



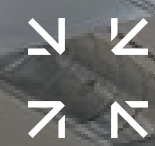


1/12



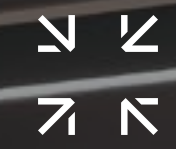






4/12







6/12





7/12











11/12








THE BUILDING
GALLERY

UNIQUE LOCATION
FLOOR PLANS

TEAM
TECHNICAL SPECS

GET IN TOUCH
FINISHES & MATERIALS

TOTAL SQ FT FOR EACH FLOOR				
FIVE				3,605
FOUR				10,679
THREE				18,460
TWO				22,196
ONE				23,019
GROUND				15,725

TOTAL OFFICE AREA: 93,684 SQ FT

DEVON HOUSE



THE BUILDING
GALLERY

←
FIVE
FOUR
THREE
TWO
ONE
GROUND

EXPLORE THE 3D MODEL [HERE](#)



UNIQUE LOCATION

FLOOR PLANS

TOTAL OFFICE AREA
3,605 SQ FT

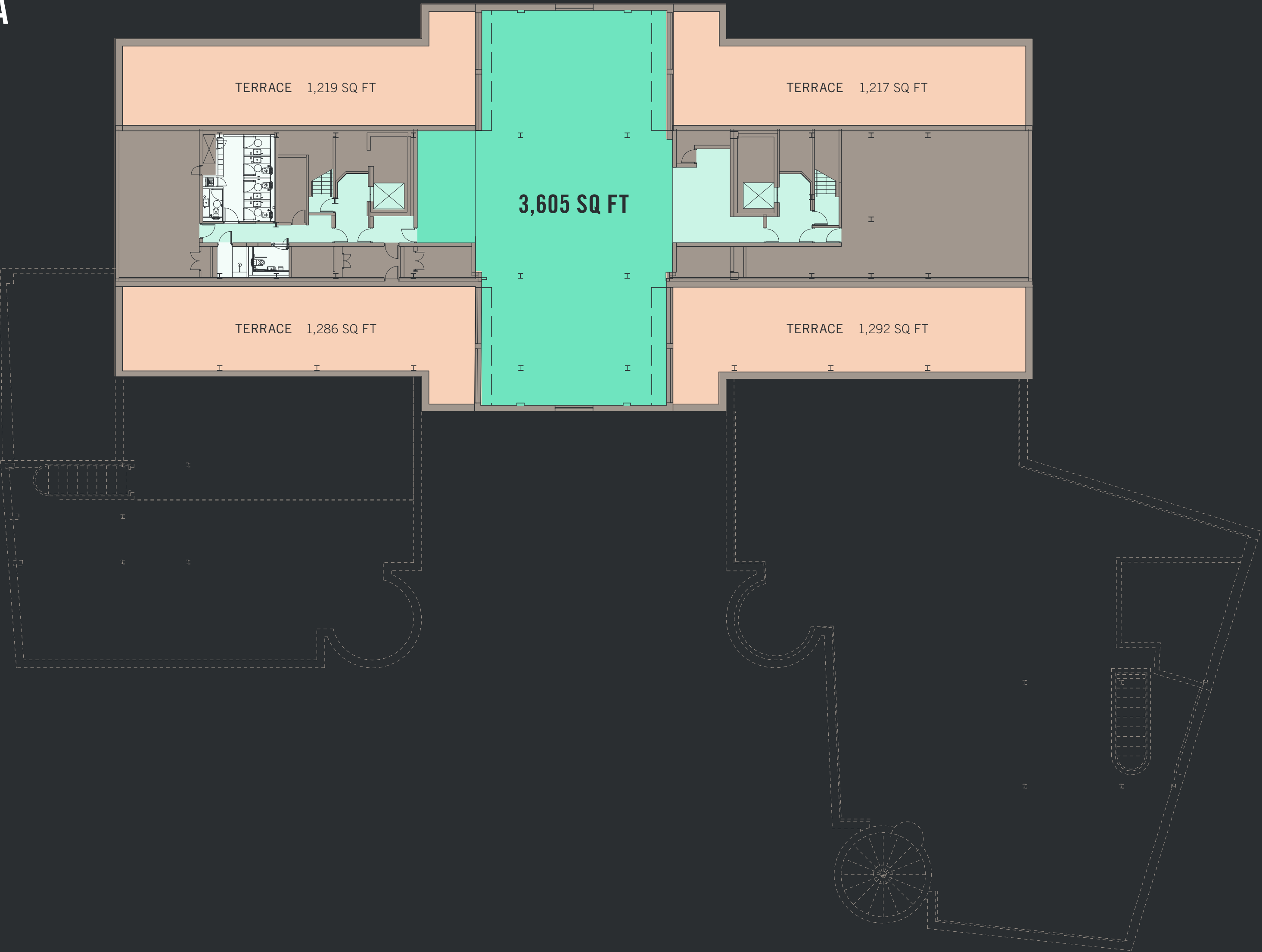
- Office Space
- Access
- Toilets
- Terrace
- Core

TEAM

TECHNICAL SPECS

GET IN TOUCH

FINISHES & MATERIALS



DEVON HOUSE



THE BUILDING
GALLERY

←
FIVE
FOUR
THREE
TWO
ONE
GROUND

EXPLORE THE 3D MODEL [HERE](#)



UNIQUE LOCATION

FLOOR PLANS

TOTAL OFFICE AREA
10,679 SQ FT

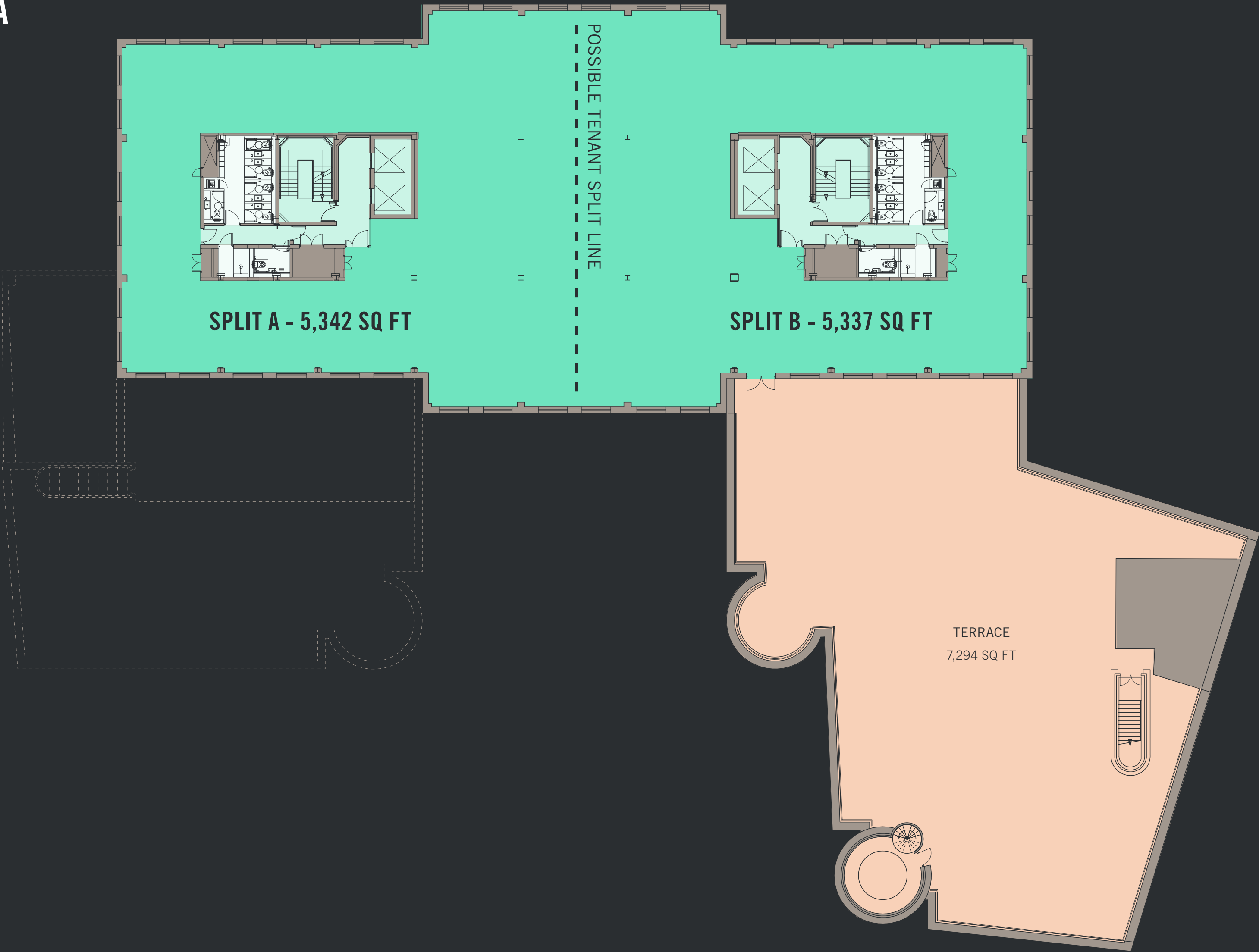
- Office Space
- Access
- Toilets
- Terrace
- Core

TEAM

TECHNICAL SPECS

GET IN TOUCH

FINISHES & MATERIALS



DEVON HOUSE



THE BUILDING
GALLERY

←
FIVE
FOUR
THREE
TWO
ONE
GROUND

EXPLORE THE 3D MODEL [HERE](#)



UNIQUE LOCATION

FLOOR PLANS

TOTAL OFFICE AREA
18,460 SQ FT

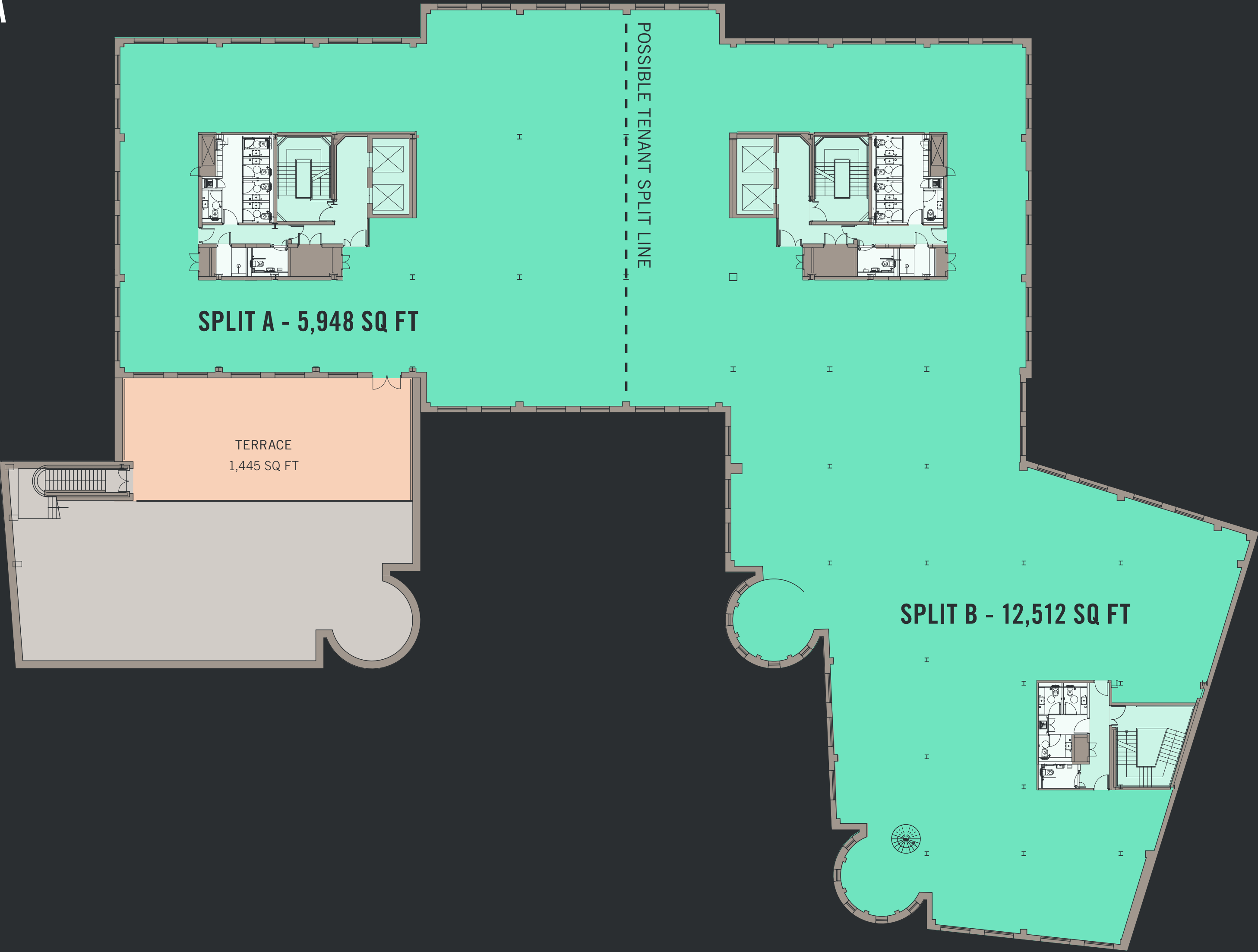
- Office Space
- Access
- Toilets
- Terrace
- Core

TEAM

TECHNICAL SPECS

GET IN TOUCH

FINISHES & MATERIALS



DEVON HOUSE



THE BUILDING
GALLERY

UNIQUE LOCATION
FLOOR PLANS

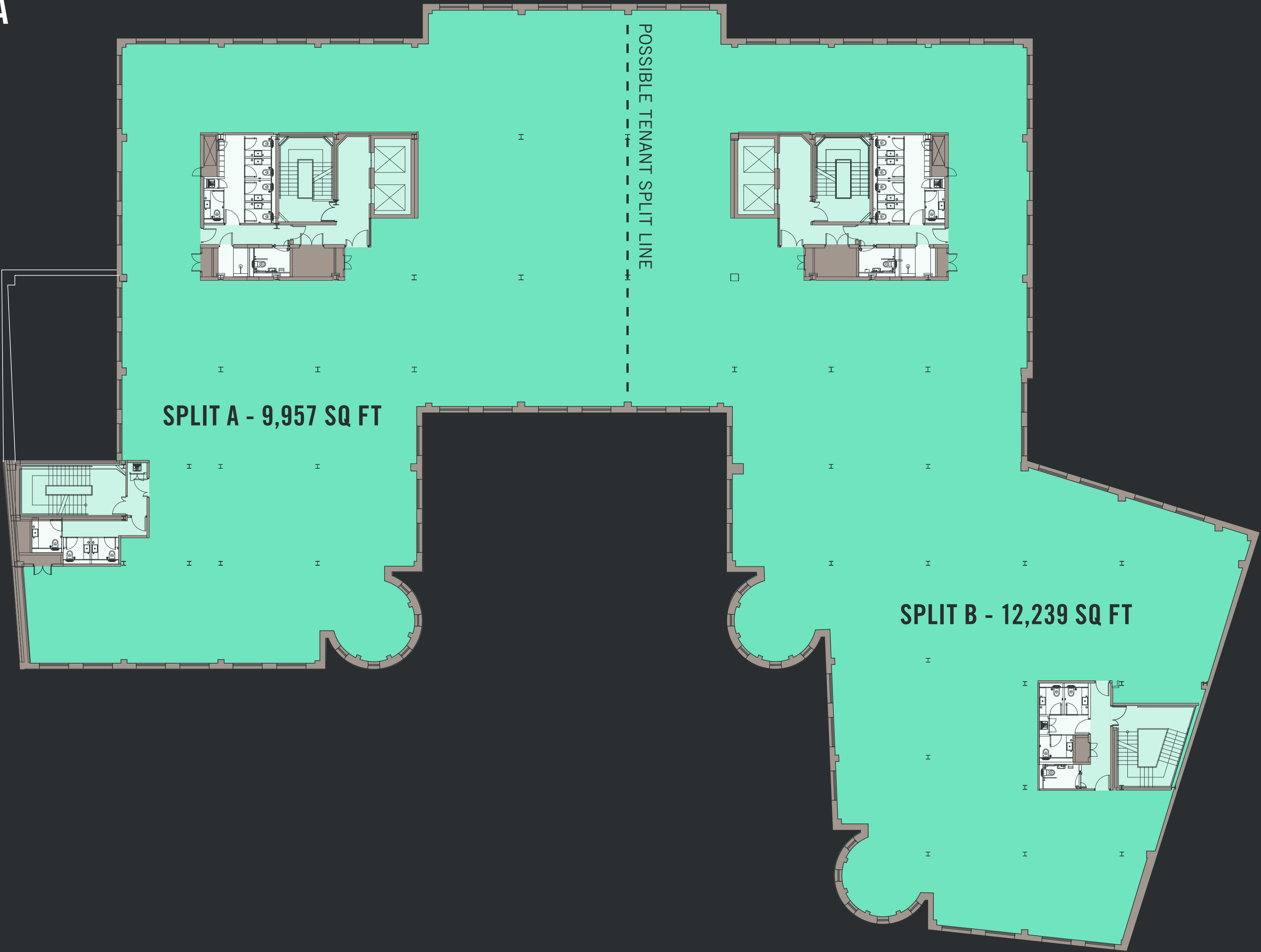
TEAM
TECHNICAL SPECS

GET IN TOUCH
FINISHES & MATERIALS

←
FIVE
FOUR
THREE
TWO
ONE
GROUND

TOTAL OFFICE AREA
22,196 SQ FT

- Office Space
- Access
- Toilets
- Core



EXPLORE THE 3D MODEL [HERE](#)



DEVON HOUSE



THE BUILDING
GALLERY

←
FIVE
FOUR
THREE
TWO
ONE
GROUND

EXPLORE THE 3D MODEL [HERE](#)



UNIQUE LOCATION

FLOOR PLANS

TOTAL OFFICE AREA
23,019 SQ FT

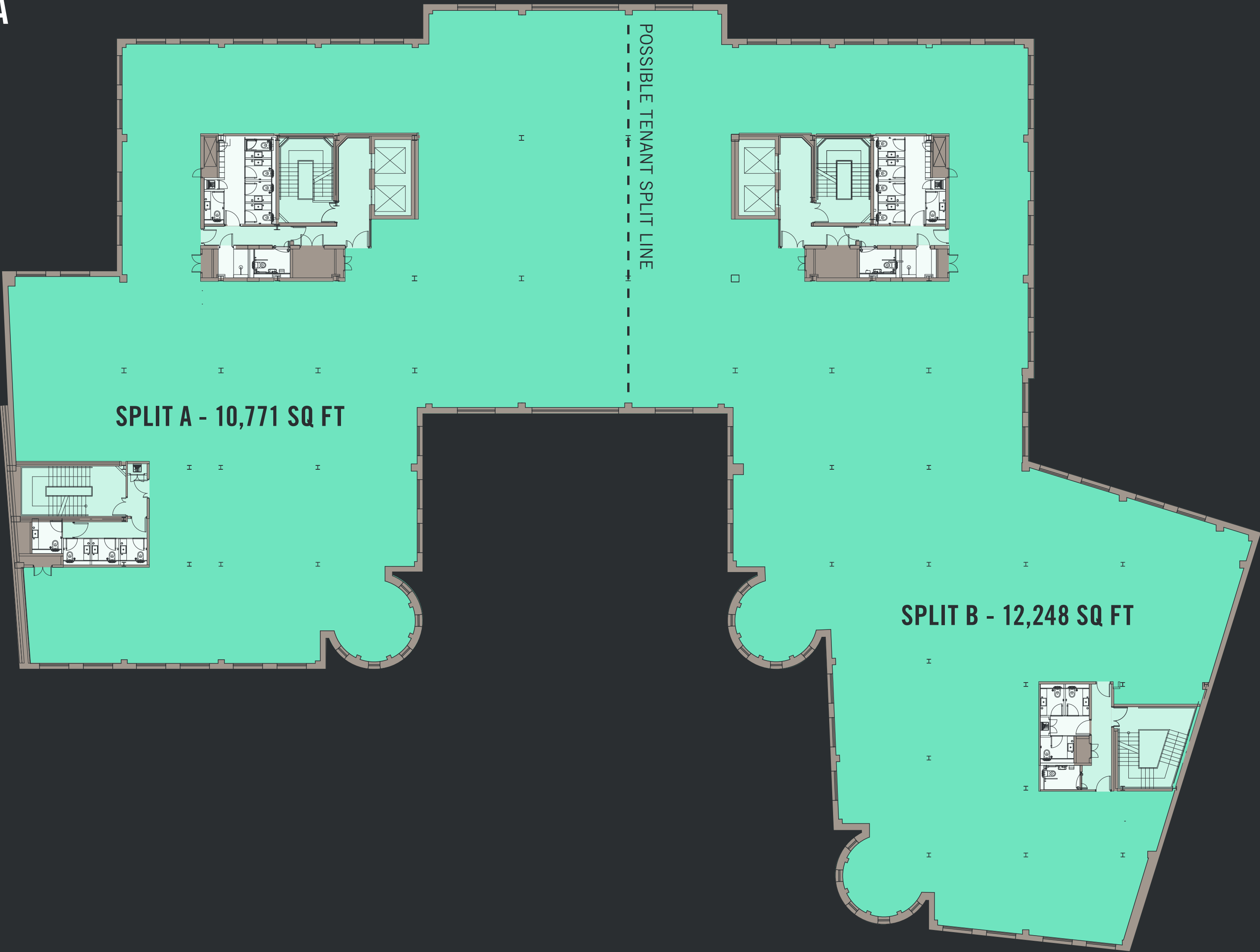
- Office Space
- Access
- Toilets
- Core

TEAM

TECHNICAL SPECS

GET IN TOUCH

FINISHES & MATERIALS



DEVON HOUSE



THE BUILDING
GALLERY

UNIQUE LOCATION
FLOOR PLANS

TEAM
TECHNICAL SPECS

GET IN TOUCH
FINISHES & MATERIALS

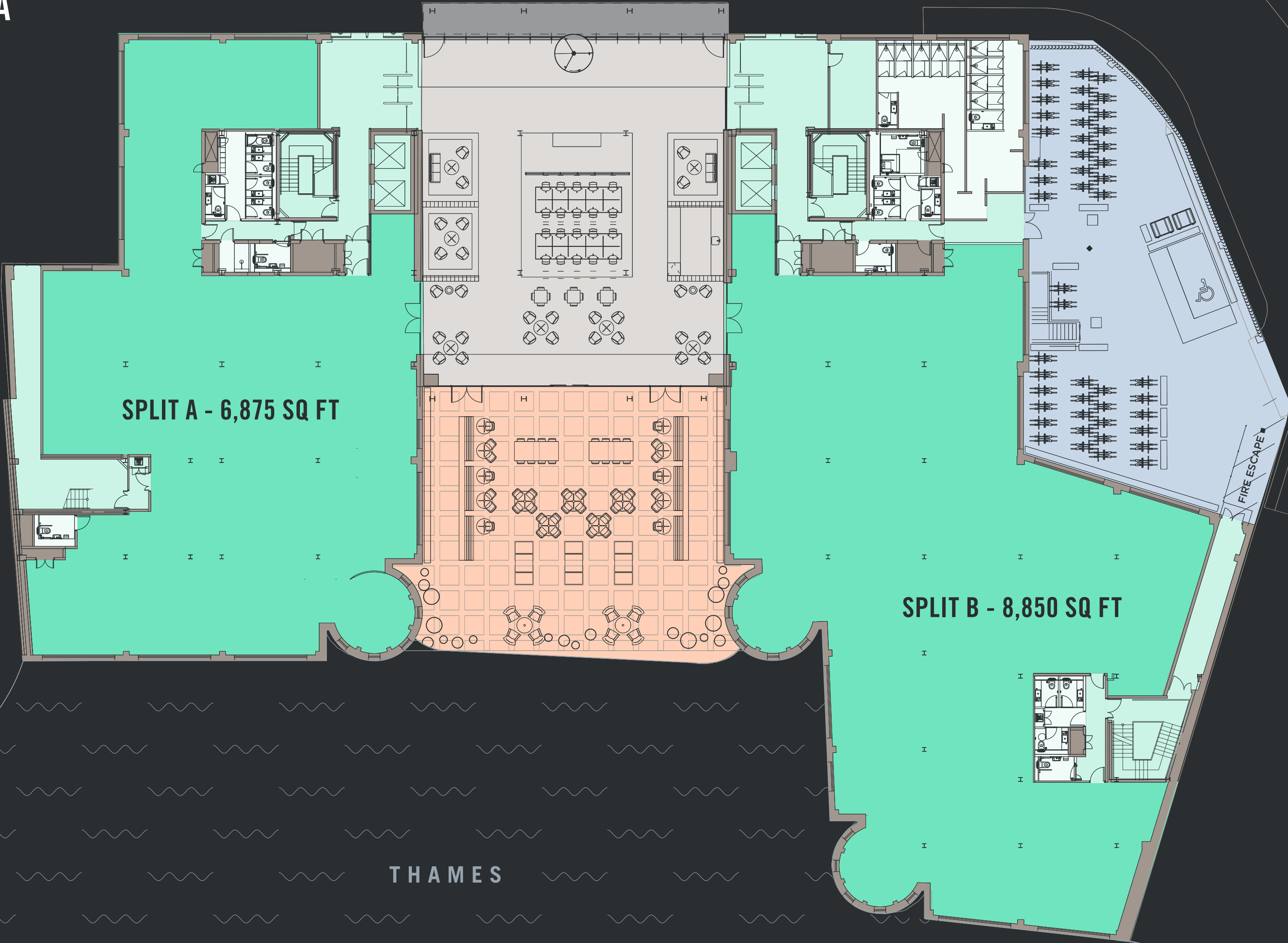
←
FIVE
FOUR
THREE
TWO
ONE
GROUND

EXPLORE THE 3D MODEL [HERE](#)



TOTAL OFFICE AREA
15,725 SQ FT

- Office Space
- Access
- Toilets
- Reception / Café
- Bike Storage
- Courtyard
- Core





THE BUILDING
GALLERY

UNIQUE LOCATION
FLOOR PLANS

TEAM
TECHNICAL SPECS

GET IN TOUCH
FINISHES & MATERIALS



Occupational Density:
1 person per 8 sq m



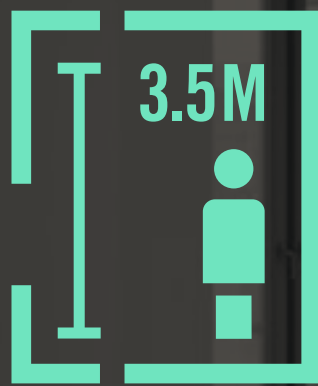
Over 17,000 sq ft of landscaped
roof terraces and courtyard



Part of a waterside
estate community



Collaborative work space
with direct access to
riverside courtyard



3.2 - 3.5m office
ceiling heights



21 showers & 190 lockers



97 x bike spaces



Progressive warehouse
style building

DEVON HOUSE



THE BUILDING
GALLERY



UNIQUE LOCATION
FLOOR PLANS



TEAM
TECHNICAL SPECS



GET IN TOUCH
FINISHES & MATERIALS



ST KATHARINE DOCKS IS A SEVEN DAY
LOCATION THAT IS FULL OF VIBRANCY,
CHARM AND DIVERSITY.



DEVON HOUSE



THE BUILDING

MAP

BE PART OF EAST LONDON'S TECH CLUSTER

Close to the action without the frenetics of the city centre. Located at the base of east London's tech cluster, Devon House is also only a 10 minute walk away from London Bridge and the city whilst sitting within the tranquil heart of St Katharine Docks.

UNIQUE LOCATION
CONNECTIONS

TEAM
SKD AMENITIES

GET IN TOUCH
ST KATHARINE DOCKS





THE BUILDING

MAP

GETTING HERE

Opposite the Tower of London and a short stroll from Tower Hill tube station, St. Katharine Docks has versatile transport links. You can reach us by boat, tube, bus, train or car.

TUBE LINES

- Central
- Circle
- District
- Hammersmith & City
- Jubilee
- Metropolitan
- Northern
- DLR
- Overground
- Crossrail / Elizabeth Line

UNIQUE LOCATION

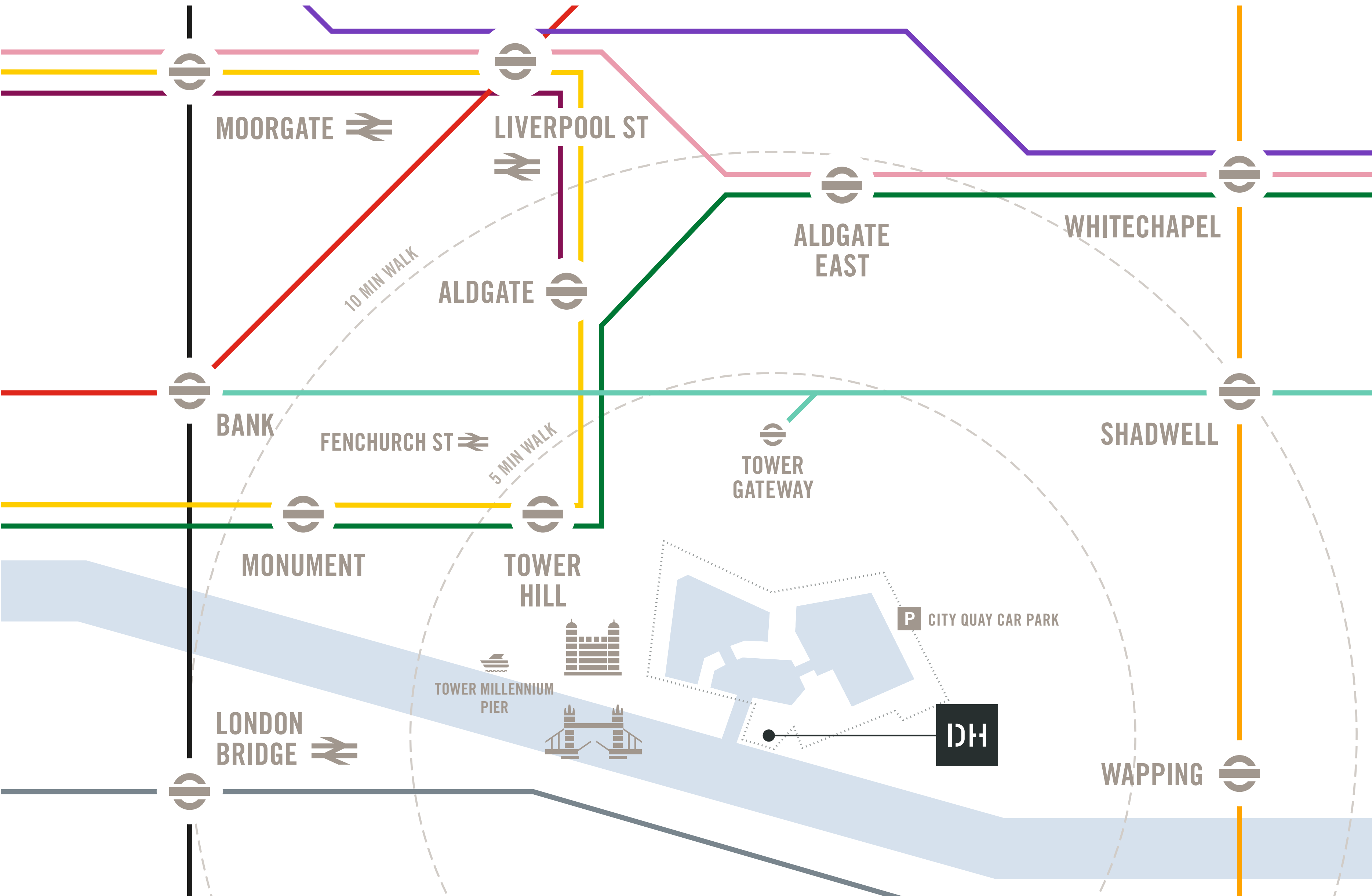
CONNECTIONS

TEAM

SKD AMENITIES

GET IN TOUCH

ST KATHARINE DOCKS



DEVON HOUSE



THE BUILDING
MAP

CRAFTED SHOPPING & DINING

Choose from artisan coffee, delicious tapas, Argentinian steak, gourmet street food or a good old fashioned English pub, all set against the charming backdrop of marina life.

CLICK THE PLUS TO GET
THE QUICK FACTS



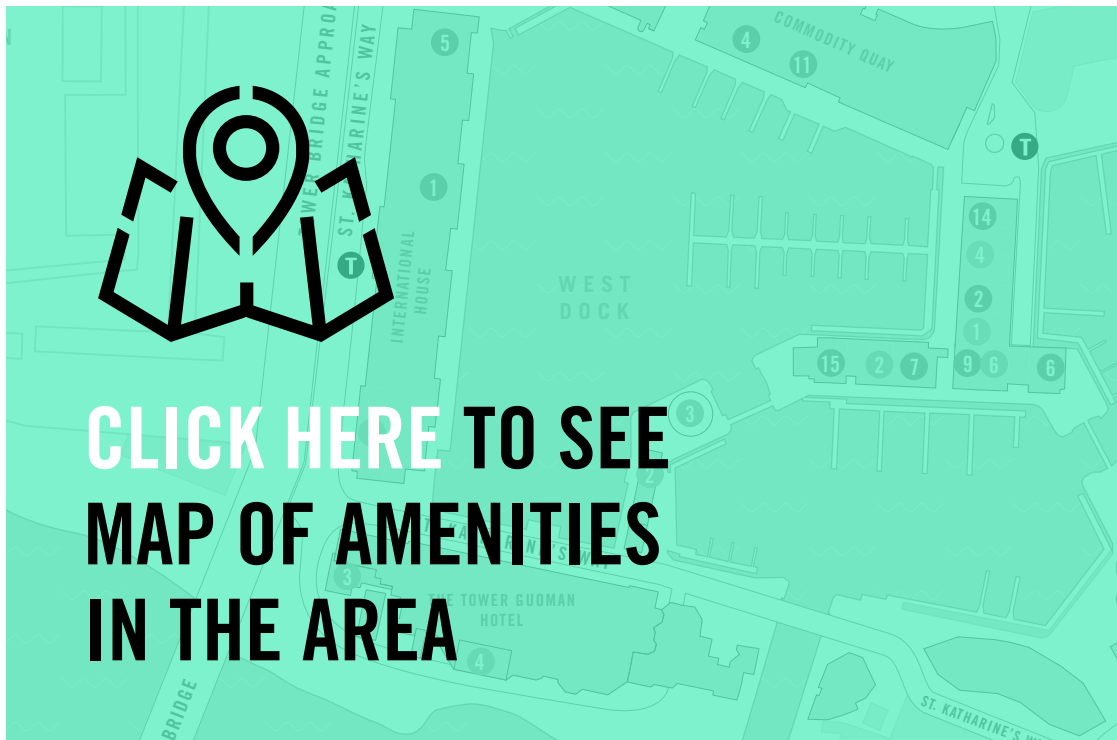
UNIQUE LOCATION
CONNECTIONS



TEAM
SKD AMENITIES



GET IN TOUCH
ST KATHARINE DOCKS



THE BUILDING
MAP

UNIQUE LOCATION
CONNECTIONS

TEAM
SKD AMENITIES

GET IN TOUCH
ST KATHARINE DOCKS

CRAFTED SHOPPING
& DINING

Choose from artisan coffee, delicious tapas, Argentinian steak, gourmet street food or a good old fashioned English pub, all set against the charming backdrop of marina life.

CLICK THE PLUS TO GET
THE QUICK FACTS



Free wifi throughout SKD

24/7

24 Bars & restaurants,
open 7 Days a week

90

Public car parking spaces
available on the estate

800

Bedrooms at the
Guoman Hotel

6

Clippers serving Tower Millennium
Pier hourly at peak times

200

Secure access, boat and yacht
moorings at SKD marina

*Content believed correct at time of creation

DEVON HOUSE



THE BUILDING MAP

FOOD

- Benugo 1
- Bravas Tapas 2
- Café Rouge 3
- CAU 4
- Côte Brasserie 5
- Dokke 6
- Emilia's Crafted Pasta 7
- Kerb Food Market 8
- Kilikya 9
- Mala Indian Restaurant 10
- Natural Kitchen 11
- Ping Pong 12
- Strada 13
- The Medieval Banquet 14
- Zizzi Italian Restaurant 15

DRINK

- Slug & Lettuce Bar 1
- St. Katharine Docks Café 2
- Starbucks 3
- The Brasserie @ The Tower Restaurant 4
- The Dickens Inn Public House 5
- White Mulberries Café 6

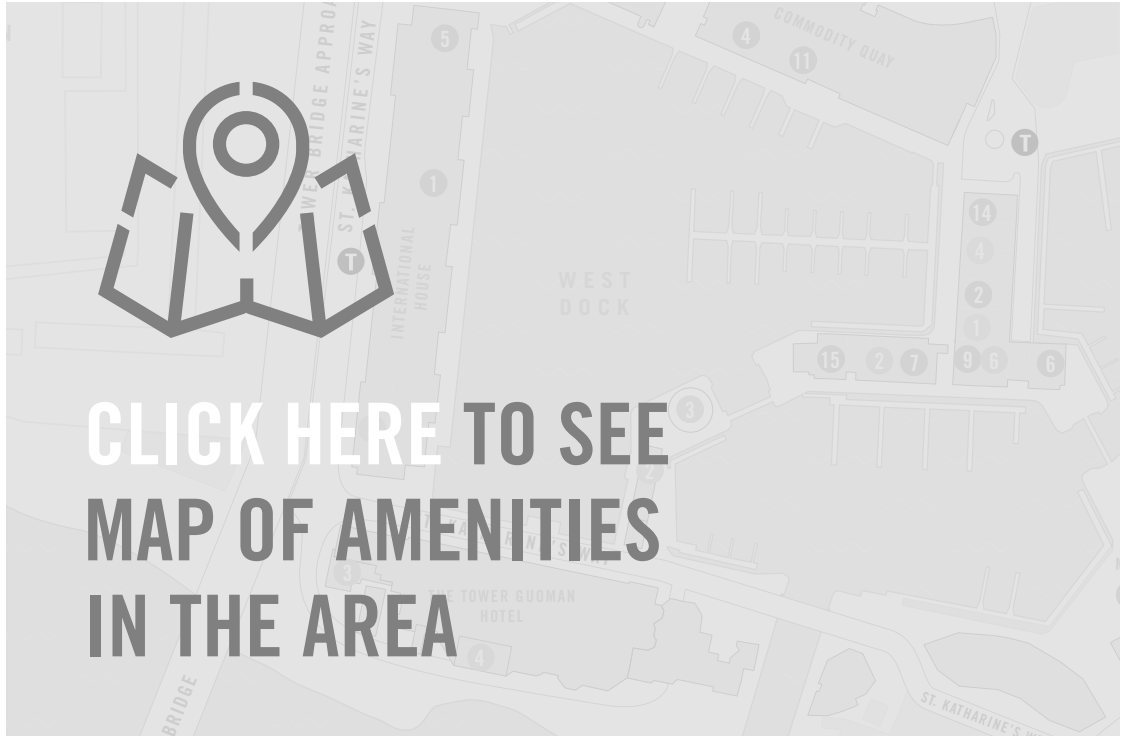
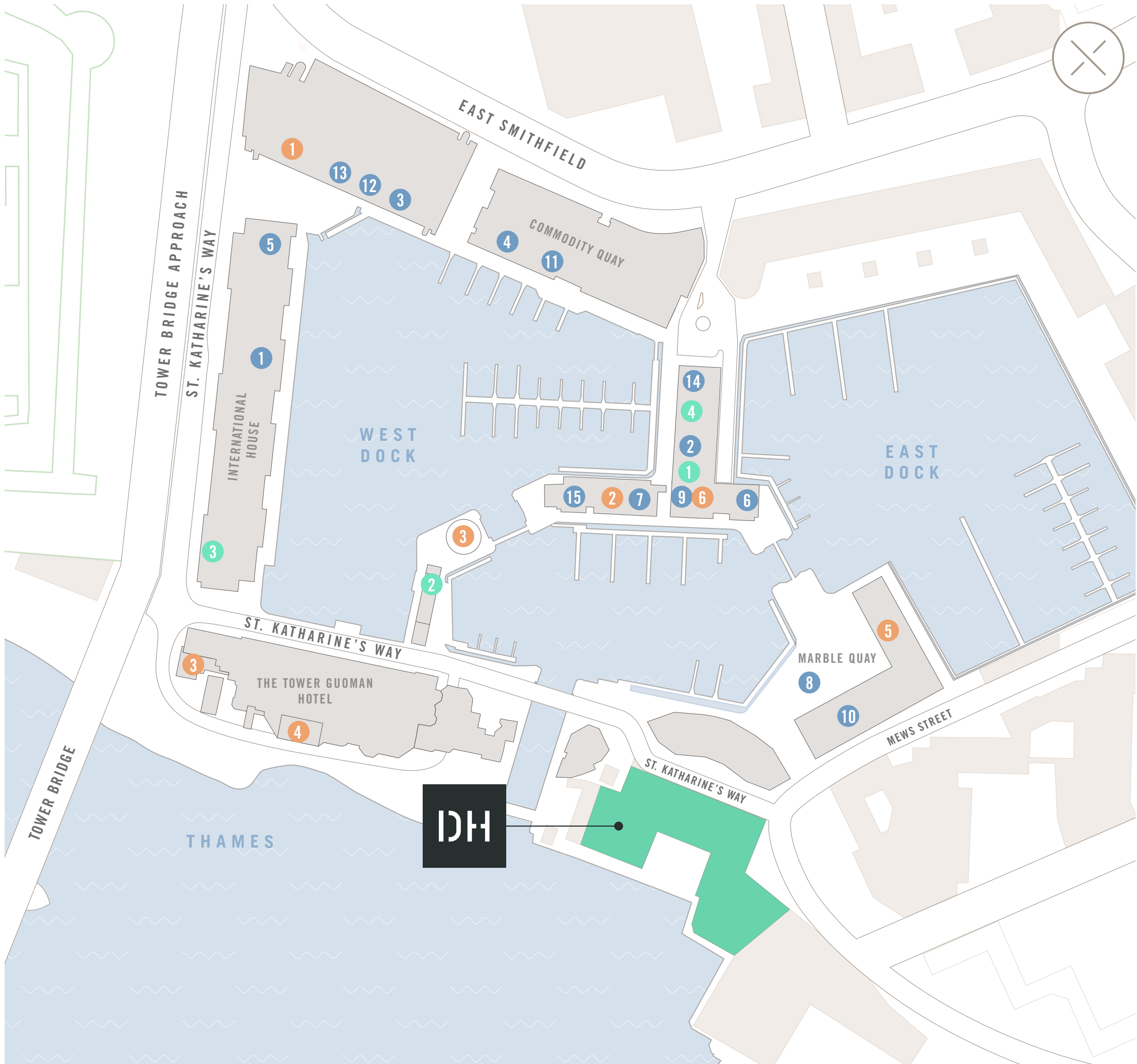
OTHER AMENITIES

- John Harding Hairdressing Salon 1
- Lagoon Dry Cleaners 2
- Tesco Express 3
- The Alexander Miles Art Gallery 4

UNIQUE LOCATION CONNECTIONS

TEAM SKD AMENITIES

GET IN TOUCH ST KATHARINE DOCKS



DEVON HOUSE



THE BUILDING
MAP

GET SOCIAL @ CENTRAL LONDON’S ONLY MARINA

Steeped in heritage and truly unique, St. Katharine Docks are home to a collection of high-quality offices, restaurants and bars. A vibrant and dynamic London quarter.

[CLICK HERE](#) TO MEET CLAIRE,
OUR EVENTS MANAGER

@StKatsDocks

/StKats

@StKats

UNIQUE LOCATION
CONNECTIONS



KERB FOOD MARKET



ALFRESCO PILATES & YOGA



SKD TALKS

TEAM
SKD AMENITIES



MARINA LIFE

GET IN TOUCH
ST KATHARINE DOCKS



LONDON ON WATER

CLICK HERE TO SEE
WHAT’S GOING ON AT
ST. KATHARINE DOCKS

GET SOCIAL @ CENTRAL LONDON’S ONLY MARINA

Steeped in heritage and truly unique, St. Katharine Docks are home to a collection of high-quality offices, restaurants and bars. A vibrant and dynamic London quarter.

[CLICK HERE](#) TO MEET CLAIRE,
OUR EVENTS MANAGER

@StKatsDocks

/StKats

@StKats



SKD TALKS



“Events are at the centre of what makes St. Katharine Docks such a vibrant place to work. Our events calendar aims to cater for all, so whether it’s health and fitness classes, floating film screenings or a weekly street food market, there is something for everyone to get involved in.”

Claire Daniels
Events Manager
St. Katharine Docks

[CLICK HERE
TO EMAIL CLAIRE](#)



MARINA LIFE



LONDON ON WATER



[CLICK HERE TO SEE
WHAT’S GOING ON AT
ST. KATHARINE DOCKS](#)

THE BUILDING

ABOUT BLACKSTONE PROPERTY MANAGEMENT

The team is responsible for transforming some of London’s most iconic and historic buildings into dynamic and progressive workspaces that attract the highest calibre commercial occupiers and retailers.

**CLICK THE PLUS TO SEE
FULL DELIVERY TEAM**



UNIQUE LOCATION



PROPERTY ADVISOR

DANNY EGAN
egan@blackstone.eu.com

THOMAS BATES
bates@blackstone.eu.com

+44 (0)20 7758 0470

TEAM

OUR RECENT TRACK RECORD



RIVER BUILDING

The River Building is a new self-contained office space with a reconfigured reception area. With a stunning one acre roof garden as well as showers, bicycle racks and changing facilities, the River Building is a truly unique proposition, in the heart of central London.

Deliveroo and Kobalt Media have moved their headquarters to The River Building.

GET IN TOUCH



ADELPHI

Adelphi is a modern architectural landmark offering 330,000 sq ft of prime office space in London’s most vibrant district.

Tenants include the likes of Condé Nast, Spotify, Shiseido and The Economist.



THE BUILDING

UNIQUE LOCATION

TEAM

GET IN TOUCH

THE DELIVERY TEAM

The wider partnership has a proven track record in creating progressive spaces and places for working communities to thrive.



PROPERTY ADVISOR

Stiff + Trevillion

ARCHITECT



PRINCIPAL DESIGNER



STRUCTURAL ENGINEER



BUILDING & FIRE SERVICES ENGINEER
BREEAM CONSULTANT



PROJECT & COST MANAGEMENT

CLICK THE PLUS TO SEE
FULL DELIVERY TEAM



BUILDING CONTROL



PLANNING CONSULTANT



TRANSPORT & HIGHWAYS CONSULTANT



LIKE WHAT YOU SEE?

We'd love to hear from you.
Please give us a call and
we can tell you more!



+44 (0)20 3296 2000



+44 (0)20 7029 3610



+44 (0)20 7499 8644

Disclaimer:
The content in this presentation is intended as a guide for the finished product.
CG and VR imagery is indicative and the maps may not be to scale.
The dimensions, layouts and floor areas provided on plans are approximate
and subject to change. Specifications are subject to change.